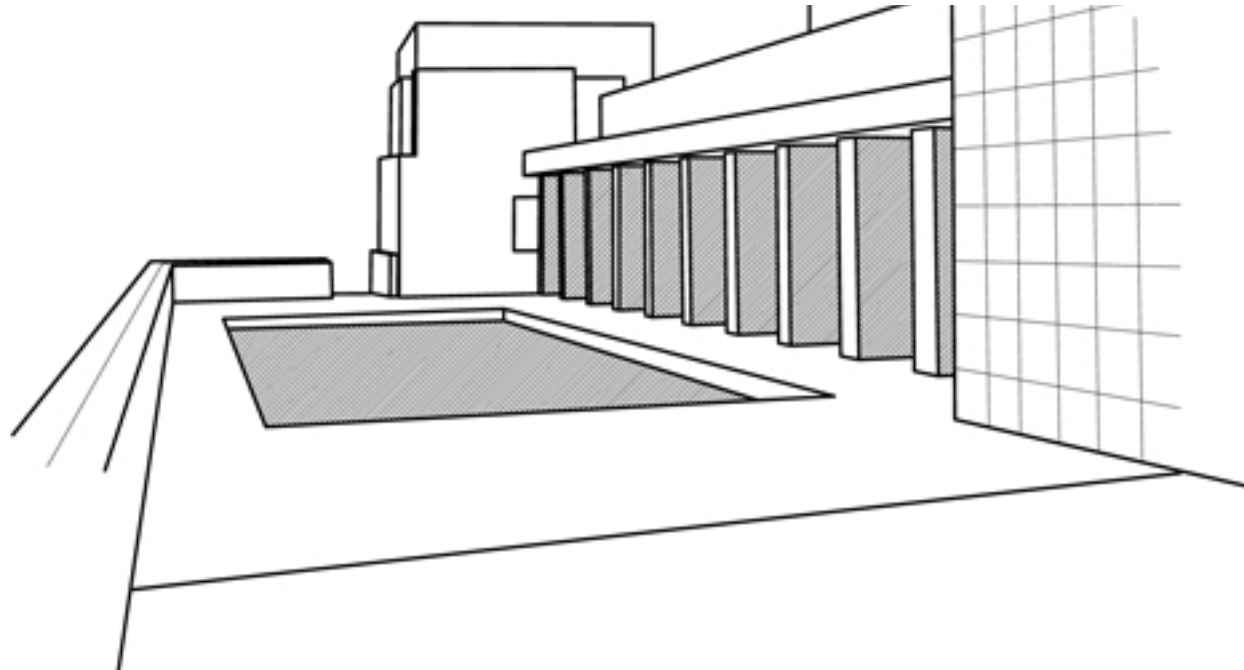


Vertical monitors

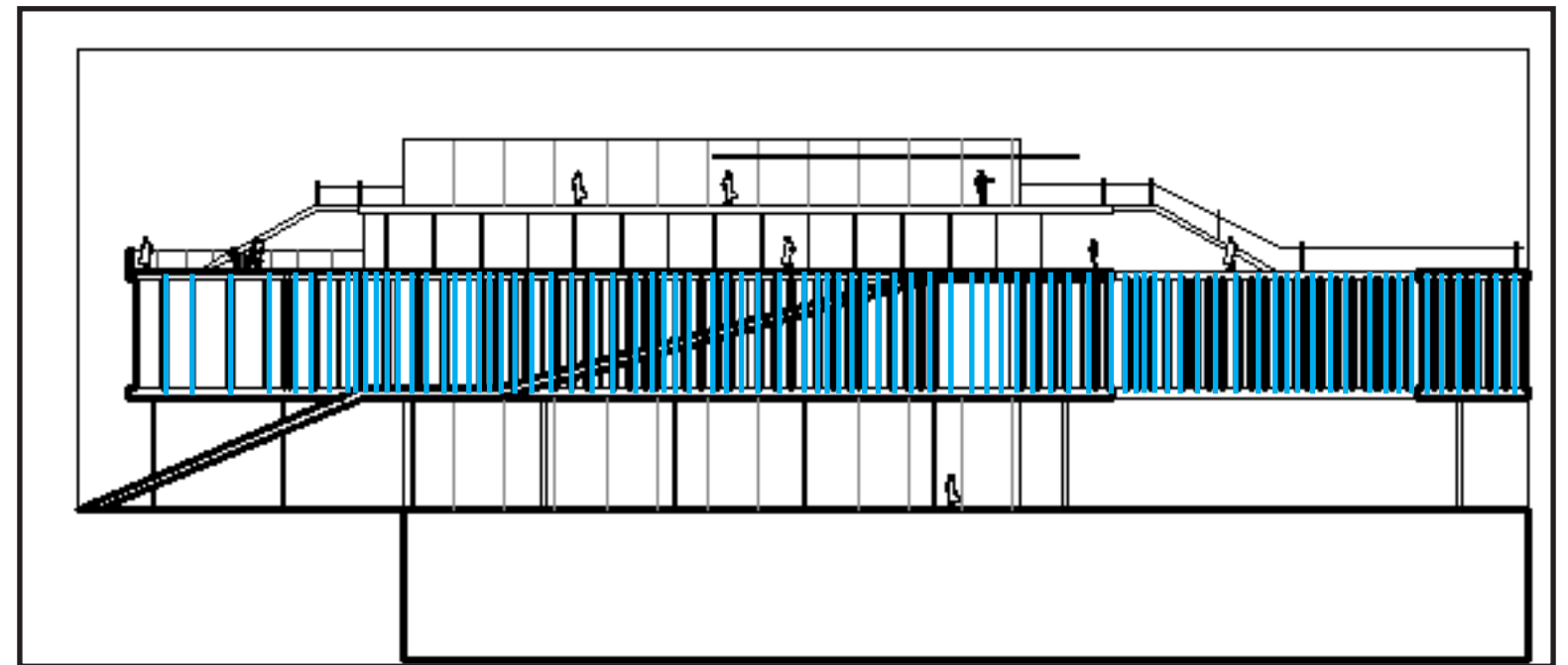
$$DF = (.2)(\text{sklight glazing area/floor area})$$

$$DF = (.2)(4900/9,800)$$

$$DF \text{ for 2nd floor using vertical fins} = .1$$



Concept of vertical fins used on north east glass. Sun shading chart does not plot north facing windows, profile angle does not matter.



The design orients windows north east to receive direct solar radiation in the summer during the morning and sunset. The use of vertical louvers is used to block out direct sunlight while still letting in natural light into spaces.

North East Windows